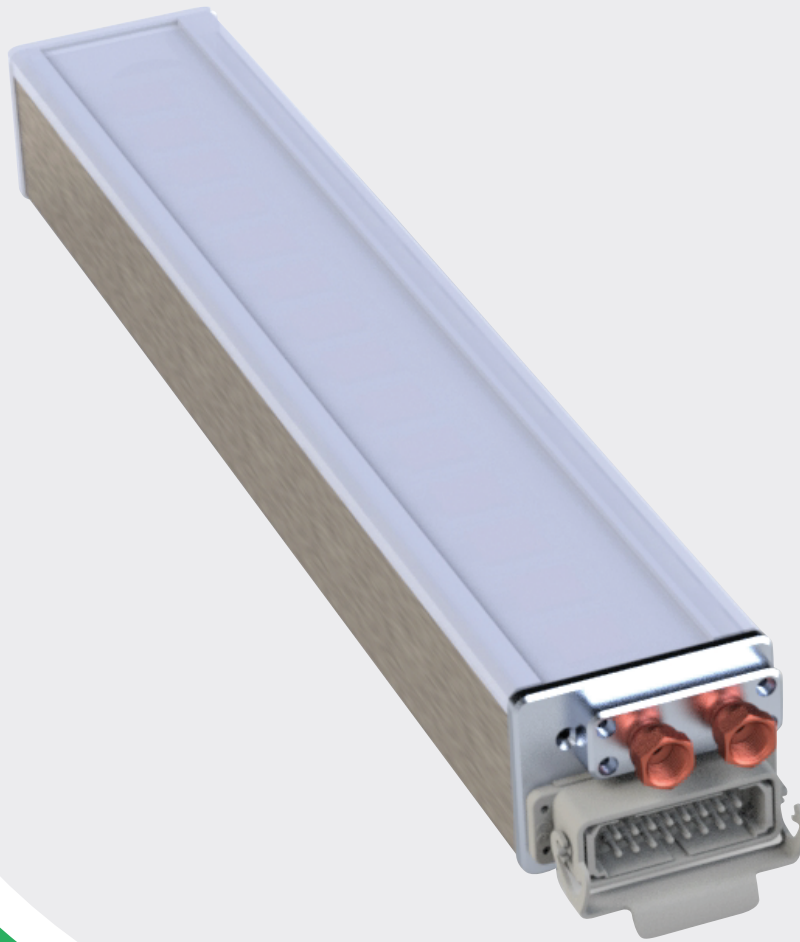


# PRIME UV IR

Creating a world of possibilities

## LEDMAX IP3 UV CURING SERIES

MAXIMUM UV CURE POWER | SUPERIOR UV ENERGY DELIVERY



HIGHEST UV OPTICAL POWER  
OUTPUT FOR TOP PROCESS  
SPEEDS

UV LED ZONES TO BEST MATCH  
SUBSTRATE WIDTH

HIGHEST QUALITY UV LED  
CHIPS TO ENSURE PEAK UV  
CURE PERFORMANCE

PRIME UV  IR

416 Mission Street | Carol Stream, IL 60188, USA | p: +1-630-681-2100 | [www.primeuv.com](http://www.primeuv.com)

### Web Applications and a Variety of Industrial Applications

Designed utilizing the most reliable and high powered UV LED Chip technology available to deliver maximum UV energy to the substrate at Working Distances up to 25 mm. Peak UV intensity, coupled with a custom optics package, delivers uniform UV energy over the entire substrate ensuring consistent and high speed curing from wide to narrow applications. Top process speeds are achieved while substantially reducing energy requirements.



#### Applications

- Personalization
- Labels & Decals
- Direct Mail
- Security Printing
- Envelope
- Business Forms
- Newspaper
- Magazines
- Book Printing
- Packaging
- Converting



#### Premier HMI Controls

- Optimizes performance of UV LED System
- Reduces energy consumption



#### High Intensity UV LED Chips

- Auto-adjusts: 0% - 100%
- Cure UV chemistry at highest process speeds
- Mercury Free



#### Options

- Nitrogen Inerted UV
- Chilled Plate or Roller
- PLC Type (Siemens, A-B)
- UV LED Chip Emission: 365, 375, 395, 405



#### Specifications

UV Type	UV LED
Multiple Zones	Yes
Cooling Method	Water
Max Power Up to 80" (2032mm)	162.5 wpi (65 wpc)
UV LED Zones	Match Product Width
Power Levels	1% Steps
Power Driver Type	Solid State DC
Lamp Type/Emission Range	385 Standard
Remote Access Maintenance	Yes
UV Measurement	Spot
PLC - Standard	Beckhoff
HMI Type	Prime Premier (7") Prime Premier XL (16")
Compliance	RoHS, CE